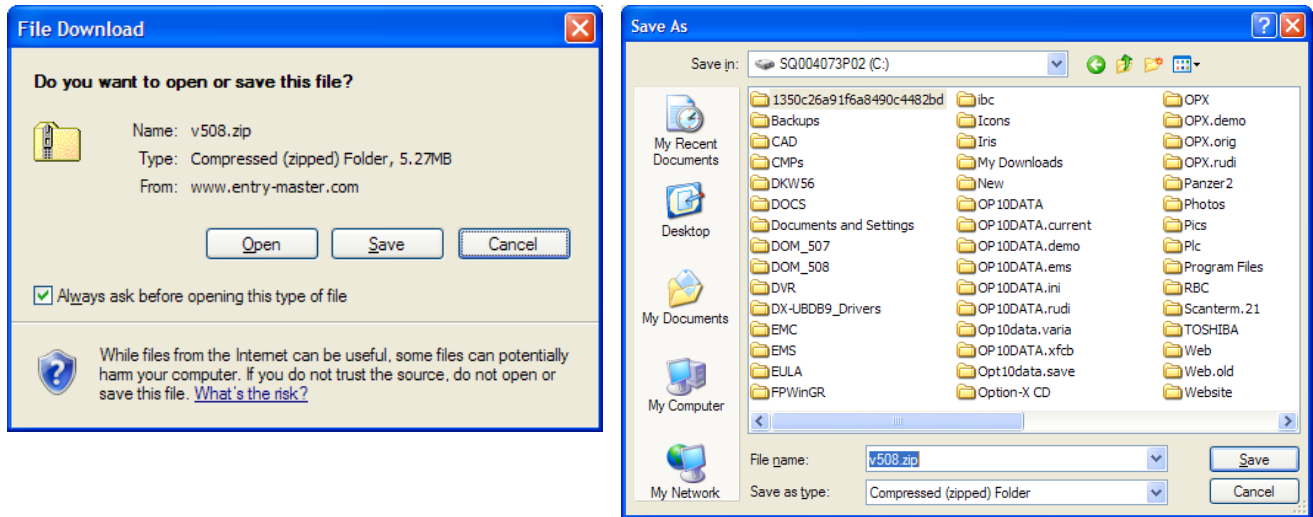
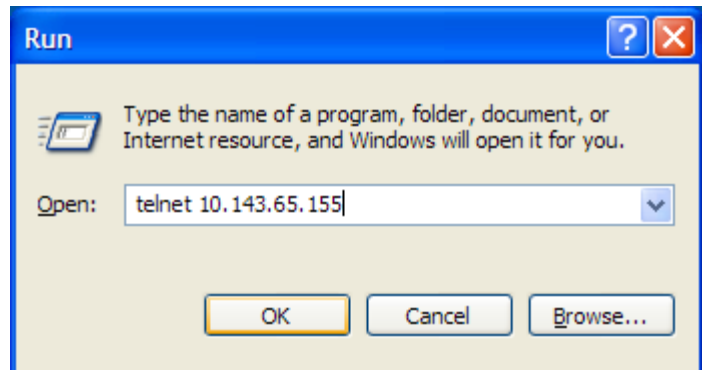
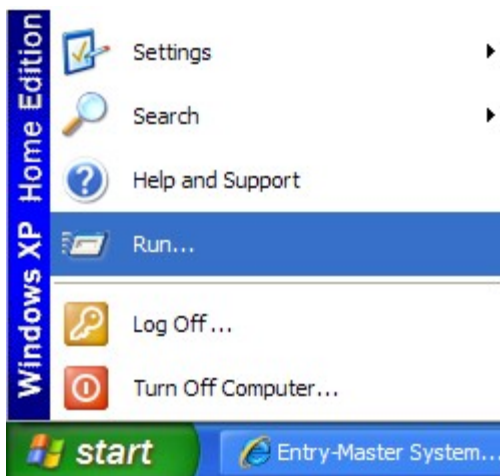


## Installing the v5.0.8 Update

- Go to <http://www.entry-master.com/v508.shtml> and follow the instructions on the screen, by downloading the **v5.0.8 Update file**. The hyperlink will read **Download the v5.0.8 Update** (or click on <http://www.entry-master.com/v508.zip>). The following dialogue box will appear:



- Click **Save** and make sure you save the file v508.zip in your C:\ (also known as the root directory of the C-drive). The file can be erased from C:\ after the update is completed.
- Log in to the **Entry-Master®** panel (or server) via *telnet*. This is accomplished by clicking on the **Start** button (in Windows), then the **Run** option, typing the **IP Address** of the panel into the box labeled **Open:** and clicking on the **OK** button (see the figures below):

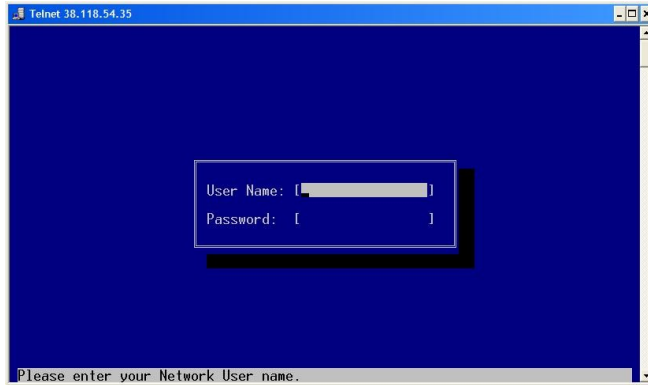


In the example, the **IP Address** of the **Entry-Master** panel is **10.143.65.155** - use your panel's IP address when upgrading.

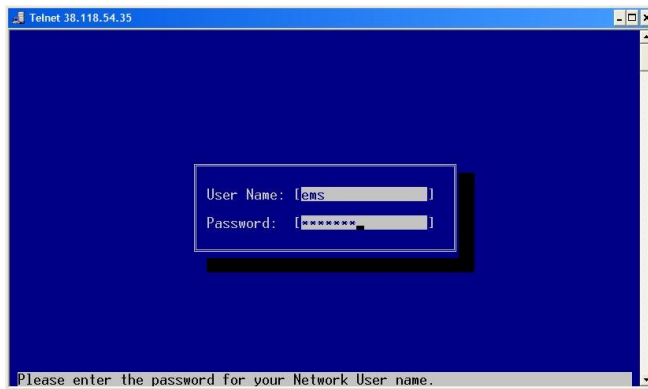
- Once the **OK** button is clicked, the *telnet login* screen will appear (see next page):

**Please Note:** If the following screen appears, type EMS followed by the Enter key, then type in the password supplied to you by EMS technical support. See the figures below.

If the screen does not look like the one below, skip to Step 5 on the next page.



Network Login Screen



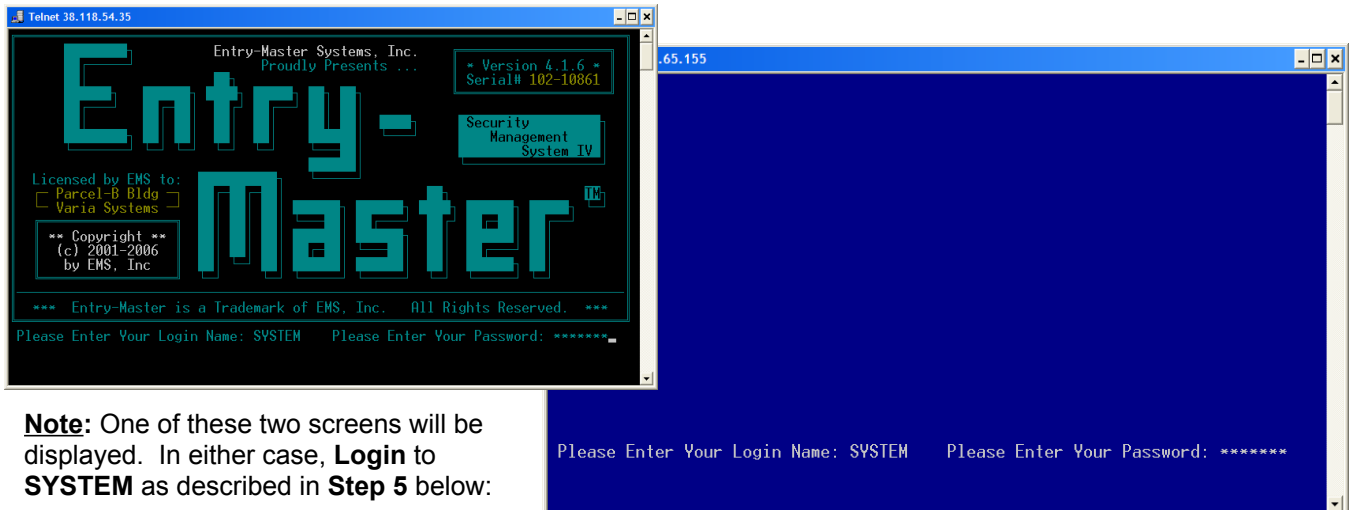
Logging into Network Screen as User "ems"

After pressing the **Enter** key, another login screen will appear (see below).



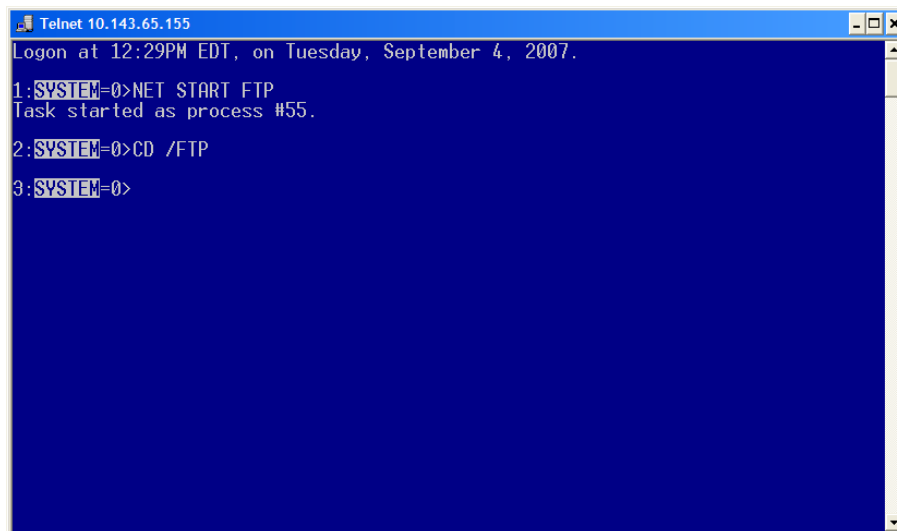
Entry-Master Login Screen

At this point, proceed to **Step 5** on the following page:

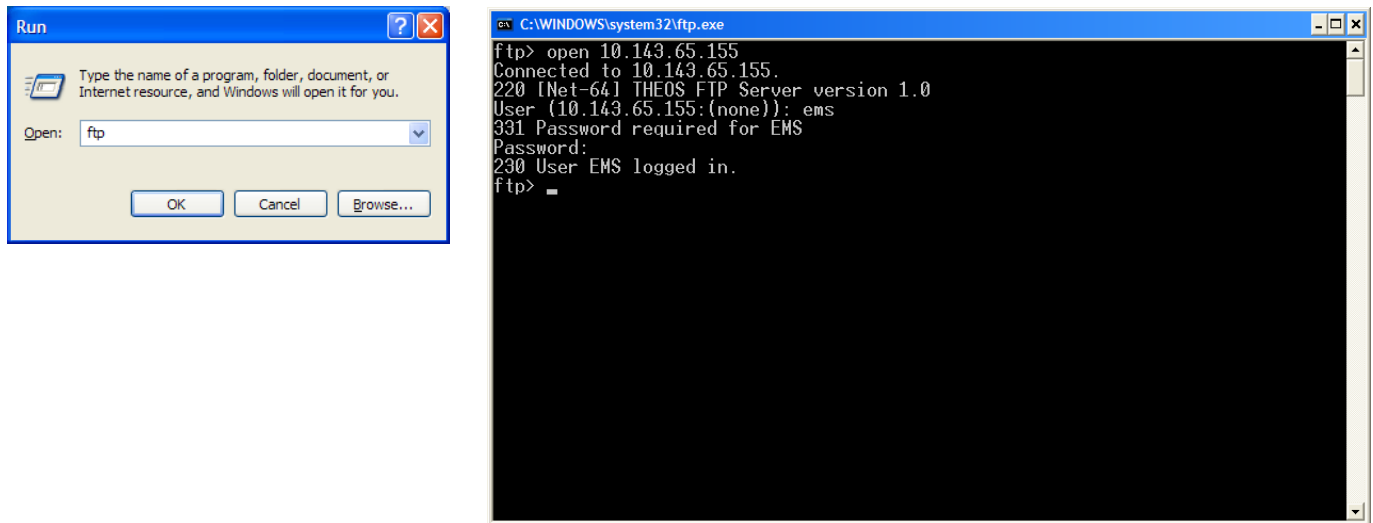


**Note:** One of these two screens will be displayed. In either case, **Login** to **SYSTEM** as described in **Step 5** below:

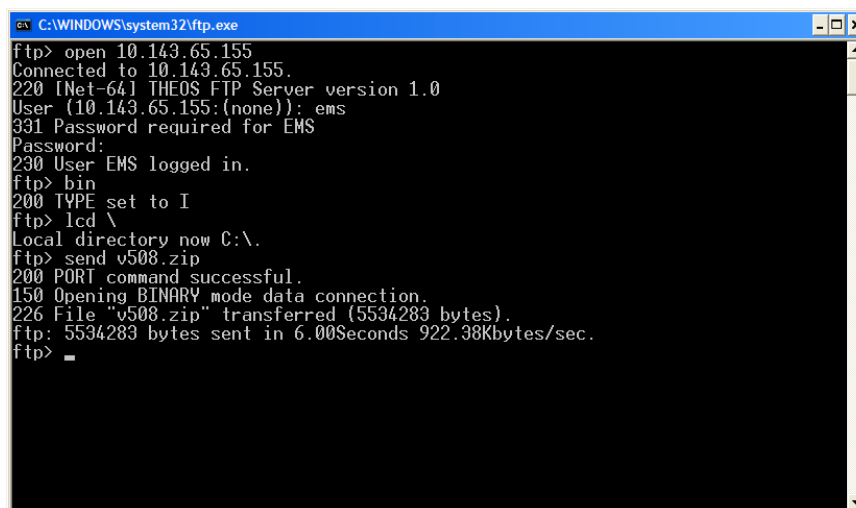
- At this point, your screen will look like one of the two screens displayed above. Regardless of which screen is displayed, **Login** to the panel by typing **SYSTEM** at the **Please Enter Your Login Name** prompt. You will then be asked for a password. You must obtain this password from *Entry-Master Systems* technical support. Once this password is typed in, you will see the following screen:



- The *system prompt* will look like the figure above (i.e. **SYSTEM=0>**). Type **NET START FTP** followed by pressing the **Enter** key, as shown in the figure above. Do not be concerned if the **Task started as process #55** message indicates a number other than **#55** - *it is of no concern*.
- Next, type **CD /FTP** (followed by the **Enter** key) as shown above.
- Now, open the Windows *FTP client*, by clicking **START** and **RUN** like in **Step 3** on **Page 1**, but now simply type **FTP** (instead of **TELNET** and the **IP Address**) and click the **OK** button. You will then see the *FTP screen*, with an **ftp>** prompt, as displayed on the next page:

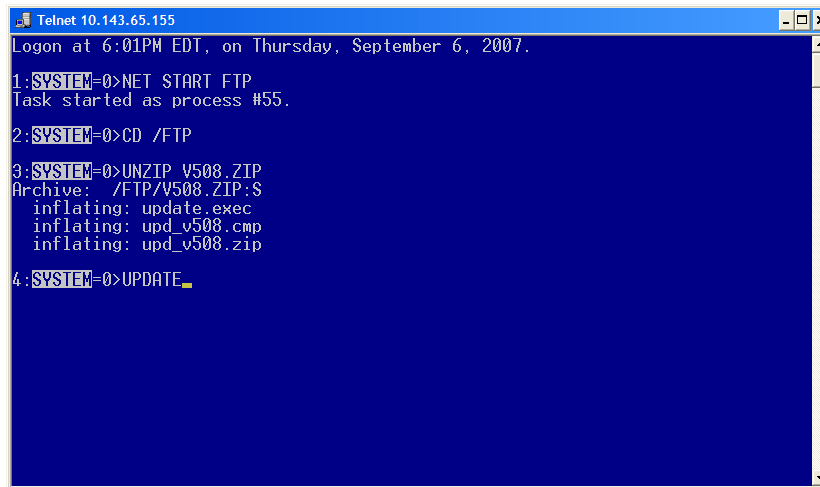


9. Type **open xx.xx.xx.xx** followed by the **Enter** key. The designation **xx.xx.xx.xx** represents the **IP Address** of the **Entry-Master** panel. In this example, the IP Address is **10.143.65.155**, but more than likely, your IP Address will be different. Be sure to use the same IP Address you used in **Step 3** above.
10. The system will ask for a **User** name; type **ems** (lower case) and press the **Enter** key. **Note that when you type a password in this step, you WILL NOT see any response.** The *FTP client* does not echo back characters (or asterisks) when a password is typed. The system will then ask for a **Password:** type in the password given to you by *EMS technical support*, followed by the **Enter** key. Your screen should look like the one above.
11. At this point, type **bin** followed by the **Enter** key.
12. Type **Lcd \** followed by the **Enter** key (there is a space between "Lcd" and "\").
13. Type **send v508.zip** followed by the **Enter** key. The screen should look like this:



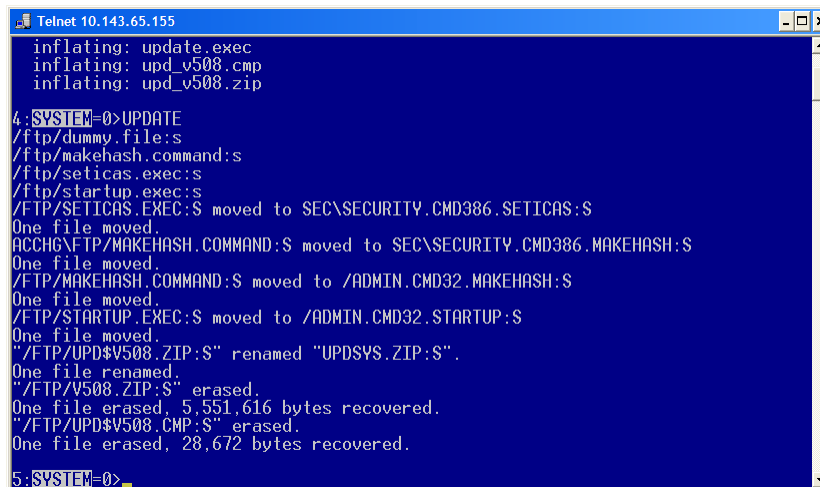
14. Type **bye** followed by the **Enter** key. The *FTP screen* should disappear.

15. Once the FTP screen disappears, the TELNET screen should be visible.
16. Type **UNZIP V508.ZIP** followed by the **Enter** key. See the screen below.



```
Telnet 10.143.65.155
Logon at 6:01PM EDT, on Thursday, September 6, 2007.
1:SYSTEM=0>NET START FTP
Task started as process #55.
2:SYSTEM=0>CD /FTP
3:SYSTEM=0>UNZIP V508.ZIP
Archive: /FTP/V508.ZIP:S
  inflating: update.exec
  inflating: upd_v508.cmp
  inflating: upd_v508.zip
4:SYSTEM=0>UPDATE
```

17. Type **UPDATE** followed by **Enter**, as shown above. The screen should look like this:



```
Telnet 10.143.65.155
  inflating: update.exec
  inflating: upd_v508.cmp
  inflating: upd_v508.zip
4:SYSTEM=0>UPDATE
/ftp/dummy.file:s
/ftp/makehash.command:s
/ftp/seticas.exec:s
/ftp/startup.exec:s
/FTP/SETICAS.EXEC:S moved to SEC\SECURITY.CMD386.SETICAS:S
One file moved.
ACCHG\FTP/MAKEHASH.COMMAND:S moved to SEC\SECURITY.CMD386.MAKEHASH:S
One file moved.
/FTP/MAKEHASH.COMMAND:S moved to /ADMIN.CMD32.MAKEHASH:S
One file moved.
/FTP/STARTUP.EXEC:S moved to /ADMIN.CMD32.STARTUP:S
One file moved.
"/FTP/UPD$V508.ZIP:S" renamed "UPDSYS.ZIP:S".
One file renamed.
"/FTP/V508.ZIP:S" erased.
One file erased, 5,551,616 bytes recovered.
"/FTP/UPD$V508.CMP:S" erased.
One file erased, 28,672 bytes recovered.
5:SYSTEM=0>
```

18. Type **REBOOT** followed by the **Enter** key. The System will display the following message:

**\*\*\* YOU ARE ABOUT TO REBOOT A REMOTE SYSTEM \*\*\***

**Ok to reboot the system (Y/N)?**

19. Press the **Y** key. Once **Y** is pressed, the system will immediately re-boot. **You will not see the "Y" that you typed.** The system has re-booted and **terminated** the **TELNET** session.
20. Click on the **x** located in the upper right-hand corner of the **TELNET** screen to close it. You are now finished with the upgrade. The system should re-start itself and be up and running in a few short minutes.